

The entry sets the tone with an art installation of bison skulls by Utah artist Owen Mortensen. The ethereal light fixtures—by Moooi—soften the earthier elements: concrete floors and reclaimed-wood walls. **FACING PAGE:** A palette of glass, wood and steel at the front door, complemented by a half-wall that shows off a stack of logs, strikes the right balance of modern and rustic design.

IN JACKSON HOLE, WYOMING, A MODERN TAKE ON THE TRADITIONAL HIGH-COUNTRY DWELLING IS THIS YEAR'S HOME OF THE YEAR

CABIN, REIMAGINED



STORY BY HILARY MASELL OSWALD

PHOTOGRAPHY BY TREVOR TONDRO

The home's interior palette is a study in textures: board-formed concrete walls anchor the home, complemented by walls of reclaimed wood. In the kitchen, "plaster reflects the warmth of the wood," says architect Larry Pearson. To soften the hard surfaces, designer Rain Houser chose furnishings with soft lines and luxurious fabrics. In the living room, the enormous Era sectional sofa from Camerich partners with a pair of caribou-hide chairs by Alvar Aalto. The 16-foot-by-16-foot sheepskin rug from Kleen Leathers "is embedded in the idea of the ultimate rustic mountain cabin," Houser says.

"WE STARTED WITH FUNCTION—LIKE THE SOFA THAT HAS TO SEAT A LOT OF PEOPLE—AND THEN MOVED INTO THE FORM."

Rain Houser





ARCHITECTURE AND INTERIOR DESIGN BY **PEARSON DESIGN GROUP**
CONSTRUCTION BY **ON SITE MANAGEMENT, INC.**

“A GOOD HOUSE HAS MULTIPLE PERSONALITIES,”

ARCHITECT LARRY PEARSON DECLARES. THIS 5,400-SQUARE-FOOT RUSTIC-MODERN HOME, BUILT IN THE HILLS OF JACKSON HOLE, WYOMING, BEAUTIFULLY ILLUSTRATES HIS THEORY.

“It changes depending on the time of day and the season,” Pearson explains. “It reveals itself over time.”

But before their home could begin to inspire such poetic praise, Pearson’s clients, Clay Heighten and Debra Caudy, had far more pragmatic considerations for the retreat they would build for their family of six. They wanted a home that would embrace the views of the Tetons, blend in with the spectacular surroundings and allow the family to enjoy the outdoors. Their primary design directive: Dream up something with a modern regional aesthetic other than the typical log cabin.

With this “license to have some fun,” Pearson says, he and colleague Josh Barr created a home that marries contemporary leanings and raw, rustic materials. The first clue that this isn’t a run-of-the-mill cabin is the home’s sculptural butterfly roof, a bold departure from the gabled roofs so characteristic of Jackson Hole dwellings. “The roof opens to the views: one capturing the Tetons to the west,” Pearson says, “and one opening to the east, down-valley, which feels more intimate. It’s like an invitation to explore the site.”

Pearson’s choice of materials also pays tribute to the land’s beauty while drawing inspiration from its colors and rugged terrain: Reclaimed, weathered snow fencing—silvery-gray and variegated—clads much of the home and provides a rich contrast to the natural steel detailing. Board-formed concrete plays up the textural interest on the walls and fireplaces, with accents of black walnut used for interior doors and cabinets.

All of these elements are visible from afar, but the home’s biggest surprise is meant to be experienced: In lieu of a formal entry or porch, Pearson Design Group created an inviting outdoor living room. “As we were designing, it occurred to me that we could make the entry a room and embrace the lifestyle and views that Debra and Clay wanted,” Pearson explains. “It reflects the owners’ temperament perfectly.” A fireplace warms the space, while sliding barn doors keep out wind. A

rug-like, inlaid-wood floor is stylish—and adds textural contrast to the solid concrete surfaces. Rain Houser, Pearson Design Group’s lead interior designer, furnished the space much like an interior living room, with hefty, cozy pieces she designed, and even a pendant lamp by Aldo Bernardi, weighted to keep still on windy days.

Inside, board-formed concrete walls anchor the home, while weathered wood plays a dominant role on the walls and ceilings, and a concrete floor runs through the main living spaces. To soften these stark components, Houser infused the interiors with things that feel good to the touch. “Because we used minimal color, we chose elements with significant textural interest,” she explains.

The living room is a fine example. A large sectional sofa from Camerich and Alvar Aalto-designed caribou hide armchairs sit atop a 16-by-16-foot sheepskin rug. “Who doesn’t want to sink their toes into a sheepskin rug?” Houser laughs. “It’s cozy and comfortable—and embedded in the idea of a rustic mountain cabin,” she explains. “We can tip our hats to the Western vernacular without making this a traditional log cabin.” The centerpiece of the room is a custom coffee table, made from a sliced tree stump. Above it, an ethereal pendant from Moooi softens the mood of the room.

Throughout the entire house, Houser masterfully—and playfully—wove details inspired by classic high-country style. A collection of colorful arrows fills a jar beside the living room’s orange NY Chair from Alchemy. The master bedroom’s headboard is made from a giant black-walnut slab; another slab serves as a vanity top in the powder room. Houser designed the dining table from yet another piece of the wood and painted the live edge white for a modern riff on a rustic motif. And in perhaps the greatest (and hippest) tribute to the West, the wall that faces the front door holds an art installation of bison heads, created by Utah artist Owen Mortensen. “The key to marrying rustic and modern elements is the experience,” Houser says. “You expect to see these things in a mountain home in Jackson, but we used them in ways that make you experience them or see them differently.”

The unexpected discovery of these design details is at the heart of the home’s charm. “This home keeps your interest,” Larry Pearson concludes. “It invites you to enjoy the grand elements, like the views, and the smaller experiences, like savoring a cup of coffee with another person. It lives with you.” ○

Houser designed the dining table from a slab of black walnut and painted the waned edge white. “I would have painted it pink, if [owner Clay Heighten] didn’t hate pink,” Houser laughs. The designer still managed to add cheerful color to the space, courtesy of Hans Wegner Wishbone chairs from Design Within Reach and “Ascension,” the large-scale abstract by Montana artist Rocky Hawkins.

MATERIAL WORLD

Discover what gives this home its rustic, textural look.

RECLAIMED WOOD SNOW FENCING Weathered by the sun, wind and snow, this material is loved for its soft grayish tones. This home's vertical pine siding is a fine example: The shades of the wood vary depending on the material's source and exposure to the elements, making it a good match for the varied colors and textures of the surrounding landscape.

BOARD-FORMED CONCRETE Long before metal and plastic were used to form concrete into shapes appropriate for building, wood was the material of choice. It was strong enough to hold up against the pressure and weight of a concrete pour, and the texture it left on the concrete was an accepted by-product of the process. Fast-forward nearly a century, and architects and homeowners now covet the heavily textured surface of board-formed concrete.

STEEL DETAILING Architect Larry Pearson used rusted steel panels to complement the aged wood exterior, giving the home a slight industrial bent while preserving its nature-inspired color palette. "We don't think of the materials as decorative," he says. "We think of them as fundamental."



CLOCKWISE FROM TOP: In the living room, Random Lights from Moooi hang over a custom coffee table, designed by Houser and built by Integrity Builders in Bozeman. The New York Chair by Alchemy Collections adds a splash of color in the corner of the living room. Expanses of glass let in natural light and add to the home's contemporary style. FACING PAGE: "I think of the home's materials not as decorative, but as an extension of the landscape," says Pearson.

"THE WINGED ROOF FLOATS AND THE REST OF THE HOME FEELS GROUNDED. IT'S ANCHORED AND LIGHT. NOT ONE OR THE OTHER, BUT BOTH."

Larry Pearson





In the kitchen, classic Calacatta marble covers the sleek walnut island and climbs the wall behind the range and open shelving. Houser designed the rolling orange stools. "Orange is a perfect accent," she says. "It's fun, playful and modern." FACING PAGE, CLOCKWISE FROM TOP: The custom kitchen cabinets are walnut, finished with Shift knobs from Rocky Mountain Hardware. In a bathroom, a walnut slab serves as a hefty vanity top; Siena Tumburo Vessel sink from Stone Forest. Atop the floating shelves, hand-cut plywood letters are from Etsy shop SlippinSouthern. Hardware from Rocky Mountain Hardware.



CLOCKWISE FROM RIGHT: LED lights illuminate a path up the black walnut staircase at night. Light fixtures from Moooi. The bright, contemporary modern bath shows off a soaking tub by Victoria and Albert and Calacatta marble counters topped by Ronbow ceramic sinks. This custom-made cabinet feels right at home with clean lines and western-inspired hardware: Brut Pendant pulls from Rocky Mountain Hardware. FACING PAGE: The custom-designed walnut bed in the master bedroom "is a nod to George Nakashima," Houser says. The sheepskin-clad Cortina chair by Refuge is a soft counterpoint.

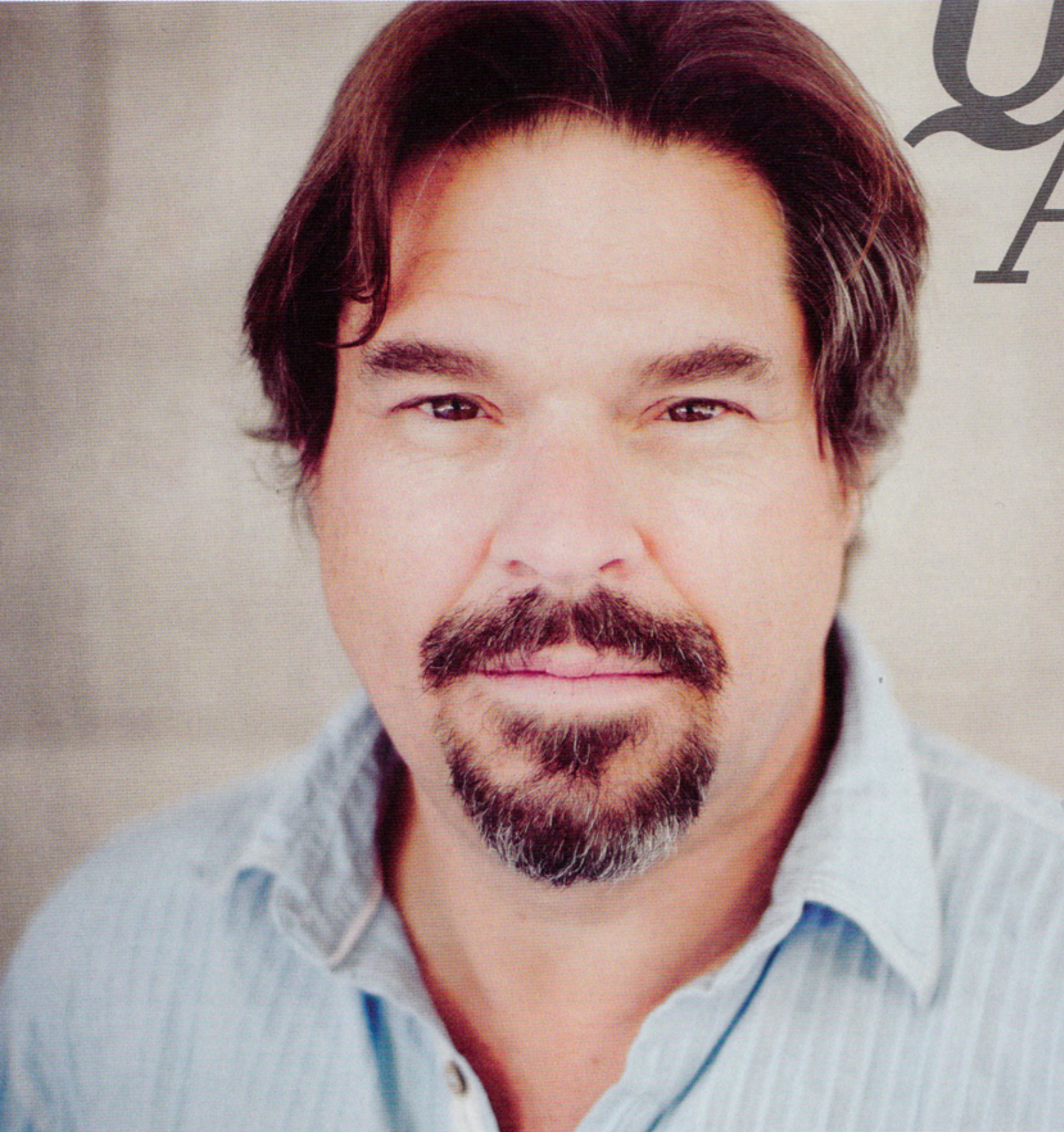


“OUR CLIENTS RESPECTED OUR DESIGN TEAM AND SAID, ‘INSPIRE US.’ THAT’S A GREAT WAY OF WORKING.”

Larry Pearson

“A house on the top of a hill in Jackson Hole has to have some weight to it,” says Pearson. “But this house has lightness, too. It’s that combination that intrigues us.” FACING PAGE: The outdoor living room feels cozy even on chilly days, thanks to hefty, hewn furniture designed by Houser and built by Integrity Builders in Bozeman. “We wanted furnishings that you can curl up in while you take in the views,” Houser says. The wood inlay floor acts like a slip-resistant rug. Pendant from Aldo Bernardi.





Q&A

Get to know the designers who created our spectacular 2014 Home of the Year

A FEW QUESTIONS

WHAT IS YOUR FAVORITE BUILDING IN THE WEST?

It's like asking, "Who is your favorite child?" Well, the "architect's" answer would be Taliesin West, where it is less about being within the architecture, but rather the relationship to the landscape, both natural and man-made. The "heart's" answer would be a Forest Service cabin somewhere in the Rockies: Simple log structure, handcrafted, and a perfect porch with just enough room for a few chairs.

WHERE IS YOUR FAVORITE PLACE TO STAY IN THE WEST?

I've just visited the Utah desert and thoroughly enjoyed the Amangiri at Lake Powell: So simple, so strong, with an acute absence of decoration. On the West Coast, it would need to be the Post Ranch Inn with the fog clearing and first glimpsing the Pacific Ocean.

WHAT BOOK ARE YOU READING?

"The Wild Trees," by Richard Preston

IF YOU COULD BUILD YOURSELF A HOME ANYWHERE AT ALL, WHERE WOULD IT BE?

They say that you will always go back to where you started. I would need to say somewhere north of San Francisco, perhaps near the Marin Headlands between Tiburon and Bolinas. I could imagine a small redwood home with wrap-around porch, south-facing views across the water...

WHAT ARE YOU LOOKING FORWARD TO?

I'm lucky enough to be doing it. >>

LARRY PEARSON ARCHITECT, FOUNDING PRINCIPAL PEARSON DESIGN GROUP

Larry Pearson grew up hiking in the Sierra Nevada Mountains, and his deep appreciation for the subtle interplay between landscape and structure was intensified by travels to Europe and Asia. With a degree in architecture from the University of California at Santa Cruz, Pearson founded the Pearson Design Group in 1997, inspired "by regional materials and exceptional landscapes." Pearson sees himself as a storyteller, allowing narratives to unfold through his designs. pearsondesigngroup.com



Q&A

A FEW QUESTIONS

WHAT IS YOUR FAVORITE INTERIOR SPACE IN THE WEST?

I know that I am in love with a space when my heart aches when I see it. It physically hurts when I love a space. I love the serene nature of a spa or the moody feeling of an inky blue and brass restaurant/bar. One of my favorite spa spaces is Sanctuary on Camelback in Scottsdale. For retail spaces, Prada in Aspen and All Saints in Seattle are at the top of my list.

DO YOU HAVE A PIECE OF FURNITURE OR DÉCOR THAT YOU ARE IN LOVE WITH RIGHT NOW?

I am currently in love with Niamh Barry's light fixtures. All of them are amazingly beautiful but I especially love the Penumbra. It's like jewelry. I see it in an entry or an intimate space where you would enjoy it every day.

WHERE IS YOUR FAVORITE PLACE TO STAY IN THE WEST?

Although I love so many hotels in Wyoming (the White Buffalo), Colorado (the Little Nell) and Arizona, my favorite place to stay is a testament to my decision to move to Montana. I love to stay in my Airstream, which is currently sitting next to the Gallatin River. There isn't anywhere in the country that fills me with such contentment as this. Listening to the river with the sun setting over the Tobacco Root Mountains...it lacks a massage table, but I'm working on that.

WHAT ARE YOU LOOKING FORWARD TO?

There are many exciting things on the horizon. I am so blessed to be able to work with so many amazing clients. Most of our projects take about two years from start to finish, and they become a great labor of love. Additionally I have just opened a furniture showroom and lifestyle boutique. We needed to have a place in Bozeman to show clients beautiful things, and I think Bozeman is ready for a fresh perspective on interiors in the West. ○

RAIN HOUSER

LEAD INTERIOR DESIGNER
PEARSON DESIGN GROUP

Rain Houser's keen eye for design was sharpened early, thanks to her family's furniture store. Over the years, she has developed an intuitive understanding of what makes an interior space flow beautifully within the architecture of a building. Holding a BA in interior design (and a minor in art) from High Point University, Houser skillfully crafts interiors that reflect and enhance her clients' daily lives. Working alongside a talented team, Rain Houser was named lead interior designer at Pearson Design Group in 2007.

pearsondesigngroup.com