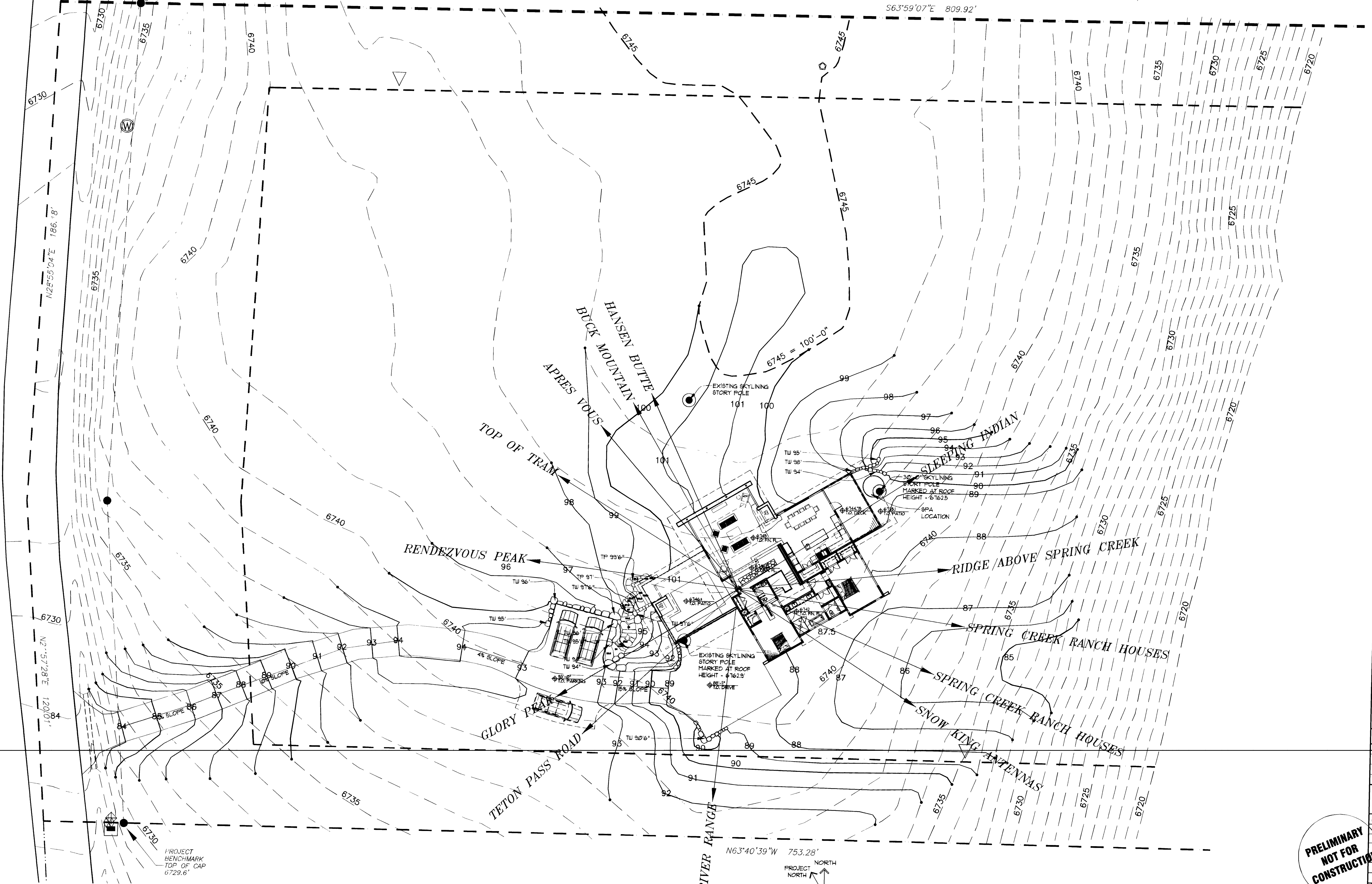
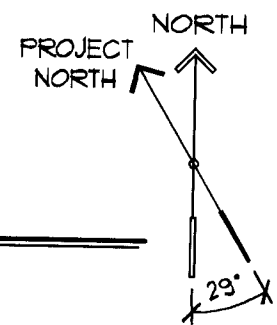


TRADER ROAD



PROJECT BENCHMARK
TOP OF CAP
6729.6'

OVERALL SITE PLAN
SCALE: 1/16" = 1'-0"
T.O. SUBFLOOR AT MAIN FLOOR = 100'-0" = 6745'



**PRELIMINARY
NOT FOR
CONSTRUCTION**

PEARSON DESIGN GROUP, Inc.
111 EAST MAIN STREET, SUITE 200, BOZEMAN, MT 59718
OFFICE: 406.551.1381 FAX: 406.551.2231

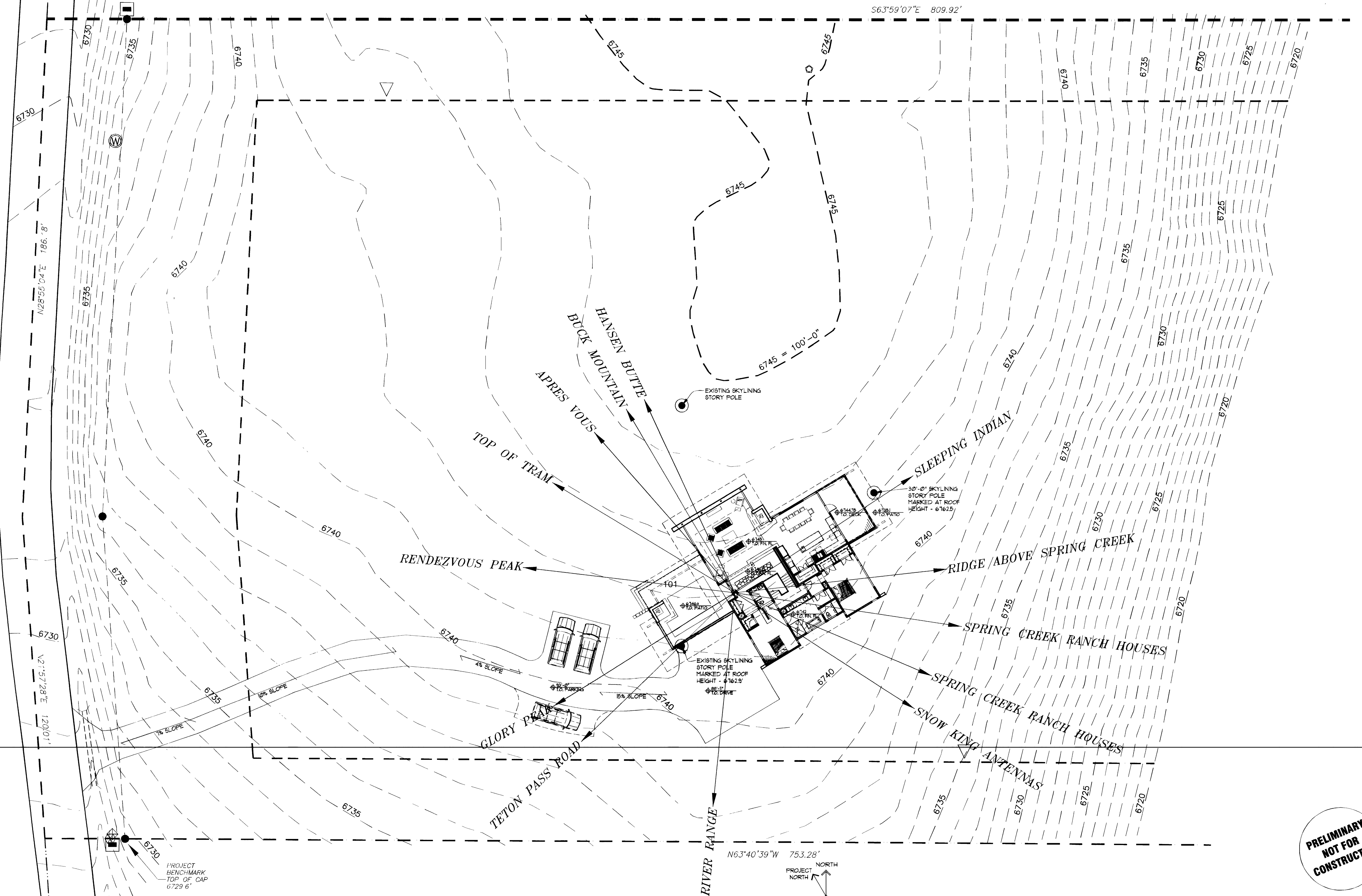
CAUDY-HEIGHTEN RESIDENCE
Gros Ventre North, Lot #17
JACKSON, WYOMING

JOB NUMBER
DRAWN BY:
FDJ
CHECKED BY:
XXX
CURRENT ISSUE:
SKYLINE REVIEW
12.09.2011
REVISION: DATE

PAGE #
A1.0

TRADER ROAD

563°59'07"E 809.92'



N28°55'04"E 186.78'

N2°57'28"E 1200.01'

PROJECT BENCHMARK
TOP OF CAP
6729.6'

OVERALL SITE PLAN
SCALE: 1/16"=1'-0"
TO SUBFLOOR AT MAIN FLOOR = 100'-0" = 6145'

N63°40'39"W 753.28'
PROJECT NORTH
NORTH
29'

PEARSON DESIGN GROUP, Inc.
111 EAST MAIN STREET SUITE 500 BOZEMAN MT 59719
OFFICE: (406) 551-1700 FAX: (406) 551-3031

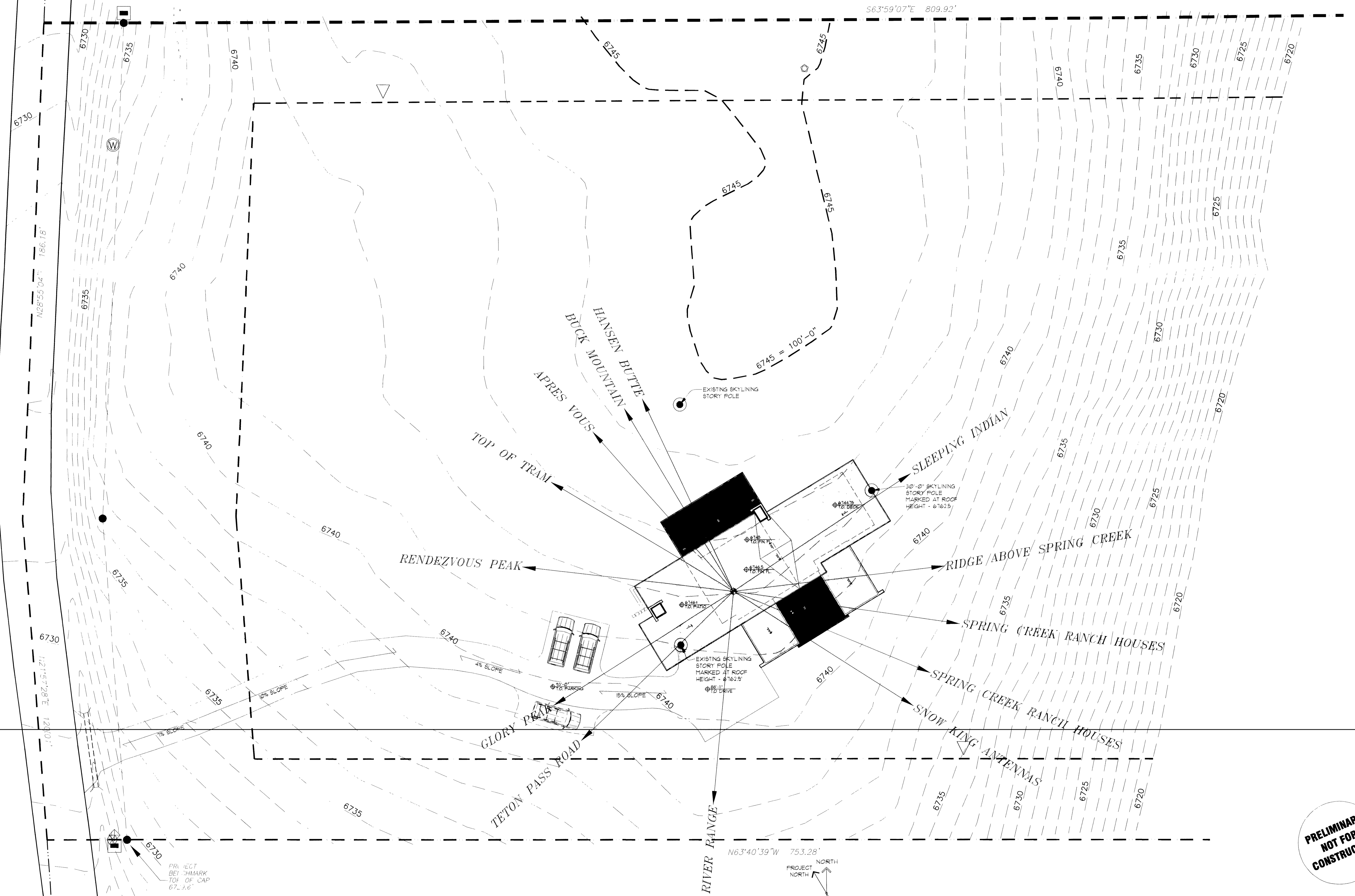
CAUDY-HEIGHTEN RESIDENCE
Gros Ventre North, Lot #17
JACKSON, WYOMING

JOB NUMBER
DRAWN BY: PDJ
CHECKED BY: XXX
CURRENT ISSUE: SKYLINE REVIEW
12.09.2011
REVISION: DATE

**PRELIMINARY
NOT FOR
CONSTRUCTION**

PAGE #
A1.0

TRIDER ROAD



S63°59'07"E 809.92'

N28°55'04"E 156.18'

N21°57'28"E 120.01'

N63°40'39"W 753.28'

PROJECT
BET. MARK
TOP OF CAP
67.3.6'

OVERALL SITE PLAN
 SCALE: 1/16"=1'-0"
 TO SUBFLOOR AT MAIN FLOOR = 100'-0" = 6745'

DESIGNER
PEARSON DESIGN GROUP, Inc.
 111 EAST MAIN STREET, SUITE 500, BOZEMAN, MT 59715
 OFFICE: 409.252.1111 FAX: 409.252.1112

CAUDY-HEIGHTEN RESIDENCE
 Gros Ventre North, Lot #11
 JACKSON WYOMING

JOB NUMBER
 DRAWN BY: FDJ
 CHECKED BY: XXX
 CURRENT ISSUE: SKYLINE REVIEW
 12.09.2011
 REVISION: DATE

**PRELIMINARY
 NOT FOR
 CONSTRUCTION**

PAGE #
A1.0